

KÄRCHER

makes a difference

BLV 18-200 Battery



Deutsch	5
English	12
Français	18
Italiano	25
Nederlands	32
Español	39
Português	46
Dansk	53
Norsk	60
Svenska	66
Suomi	72
Ελληνικά	79
Türkçe	86
Русский	93
Magyar	101
Čeština	107
Slovenščina	114
Polski	121
Românește	128
Slovenčina	134
Hrvatski	141
Srpski	148
Български	154
Eesti	162
Latviešu	168
Lietuviškai	175
Українська	182
Қазақша	189
日本語	197
العربية	204



Register
your product

www.kärcher.com/welcome



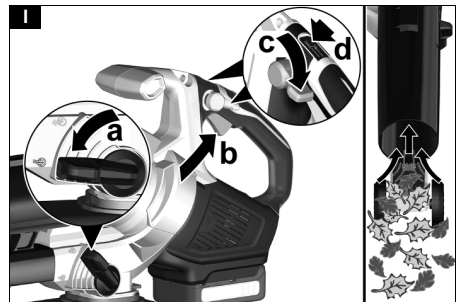
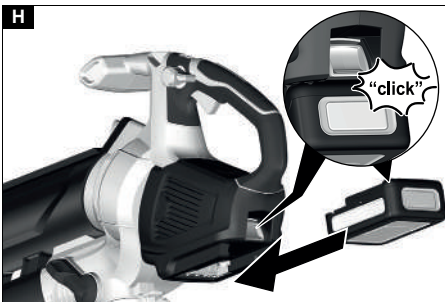
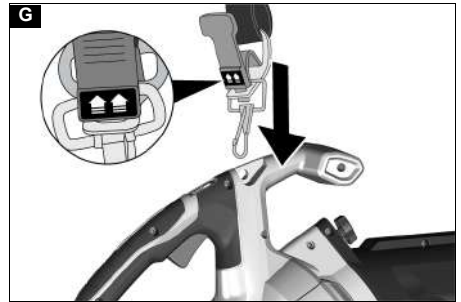
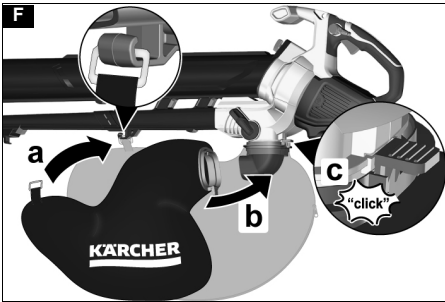
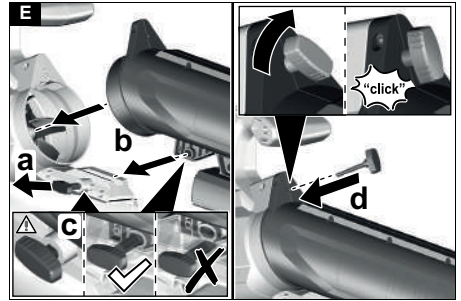
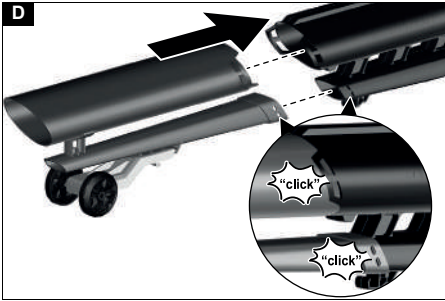
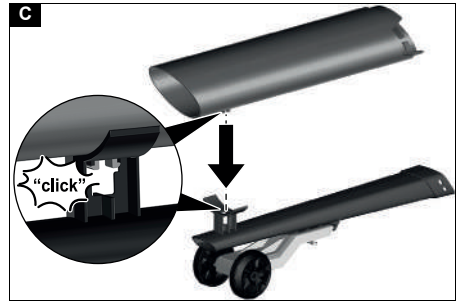
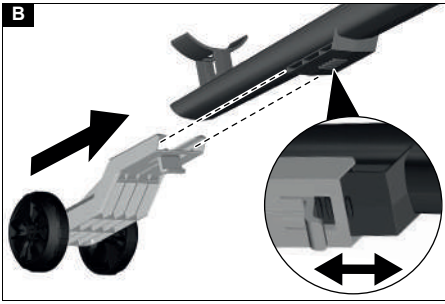
EAC

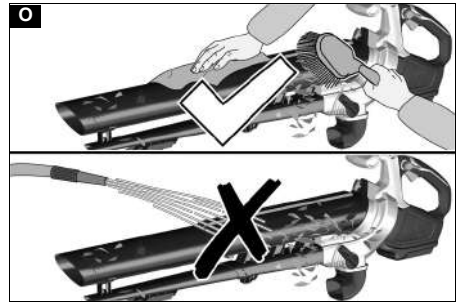
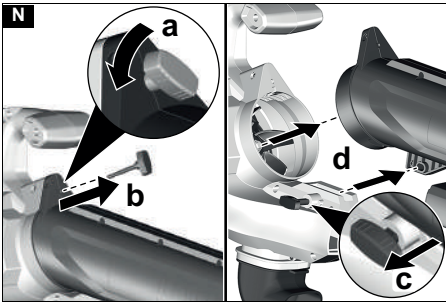
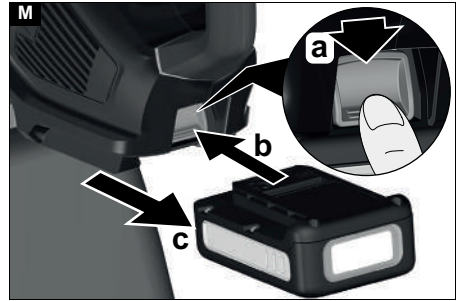
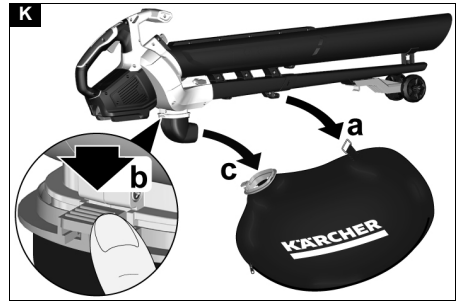
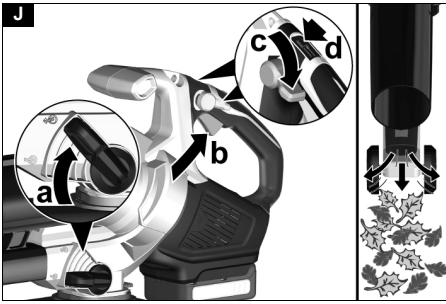


59689040 (10/20)

A







Contents

General notes	12
Safety instructions	12
Intended use	14
Environmental protection	14
Accessories and spare parts	14
Scope of delivery	14
Safety devices	14
Symbols on the device	14
Description of the device	14
Installation	15
Operation	15
Transport and storage	16
Care and service	16
Troubleshooting guide	17
Warranty	17
Technical data	17
EU Declaration of Conformity	18

General notes



Read these safety instructions, these original instructions, the safety instructions provided with the battery pack and the original instructions supplied with the battery pack/standard charger before using the device for the first time. Act in accordance with them. Keep the booklets for future reference or for future owners.

In addition to the notes in the operating instructions, you also need to take into consideration the general safety regulations and accident prevention guidelines applicable by law.

Safety instructions

Hazard levels

⚠ DANGER

• Indication of an imminent threat of danger that will lead to severe injuries or even death.

⚠ WARNING

• Indication of a potentially dangerous situation that may lead to severe injuries or even death.

⚠ CAUTION

• Indication of a potentially dangerous situation that may lead to minor injuries.

ATTENTION

• Indication of a potentially dangerous situation that may lead to damage to property.

General safety instructions

⚠ DANGER • Severe injuries through a lack of concentration when working. Do not use the device when under the influence of drugs, alcohol, or medication, or when you are tired.

⚠ WARNING • Read all safety warnings and all instructions. Failure to follow the warnings and instructions may result in electric shock, fire and/or serious injury. Save all warnings and instructions for future reference. • The device is not intended for use by children, persons with restricted physical, sensory or mental abilities or persons unfamiliar with these instructions. The age of the operator may be limited by local restrictions. • Ensure that all protective devices and handles are correctly fitted, securely fastened and in

good condition. • Before operation, make sure the device, all control elements, and safety devices are working properly. • Never use the device if the on/off switch on the handle does not switch on and off correctly.

• Check the housing for damage each time before using the device. • Replace worn or damaged parts as a complete set to maintain the correct balance. • Keep children and other persons out of the work area while you are using the device. • Make sure that the ventilation openings are free of deposits. • Objects can be blown by the airflow over a considerable distance. Inspect the work area thoroughly for objects such as stones, broken glass, nails, wires or strings, and remove these before using the device. • Risk of injury due to ejected material. Do not operate the device on paved surfaces or gravel. • Operate the device only on a firm, level surface and in the recommended position.

⚠ CAUTION • Familiarise yourself with the controls and the correct use of the device. • Wear full hearing protection when using the device. The device is extremely loud, and can cause permanent hearing damage if you do not strictly follow the instructions on exposure, noise reduction and hearing protection. • Wear full eye protection when using the device. The manufacturer strongly recommends wearing a full face mask or fully closed safety goggles. Normal glasses or sunglasses will not protect you from thrown objects. • Risk of injury when loose fitting clothing, hair or jewellery are sucked into the device's air intake. Tie long hair back above shoulder level. • Wear long, heavy trousers, sturdy shoes and well-fitting gloves when working with the device. Do not work barefoot. Do not wear any jewellery, sandals or short trousers.

ATTENTION • The device operator is responsible for accidents with other people and their property.

Note • Regulations may restrict the use of this device in some regions. Seek advice from your local authorities. • Have damaged or illegible warning signs on the device replaced by the authorised Customer Service department. • Before using the cordless blower vacuum, use a rake and broom to remove any contamination.

Safe operation

⚠ DANGER • Operation in explosive atmospheres is prohibited.

⚠ WARNING • Maintain a minimum distance of 15 m from persons and animals. Stop the device when any persons or animals enter this area. • Keep your face and body away from the supply port. • Make sure the feed chamber is empty before starting the device. • Do not keep your hands or other body parts in the feed chamber, the chute, or in the vicinity of other moving parts. • Do not use the device if there is a danger of lightning. • You need an unobstructed view of the work area in order to be able to recognise any potential dangers. Use the device only under good lighting conditions. • Do not run but rather walk when working with the device. Do not walk backwards. Avoid an abnormal posture, keep a stable, safe footing and maintain your balance. • Never use the device with defective protection devices or absent safety devices, such as e.g. an installed debris catcher. • Immediately stop the device and check for damage or identify the cause of the vibration if the device has been dropped, hit or vibrates abnormally. Have damage repaired by the authorised

Customer Service or replace the device. ● In the event of an accident or malfunction, immediately switch off the device and remove the battery pack. The device may not be put back into service until it has been checked by an authorised Customer Service centre. ● Risk of injury on rotating parts. Switch the motor off, remove the battery pack and make sure that all moving parts have stopped moving:

- Before leaving the device unattended.
- Before you remove blockages or clean the pipe.
- Before you check the device after it has been hit by a foreign object.
- Before checking, maintaining or working on the device.

⚠ CAUTION ● The operation of similar tools in the environment increases the risk of hearing damage and the likelihood of failing to hear potential hazards, e.g. people entering your work area. ● Do not make any changes to the device, and only use accessories and spare parts recommended by the manufacturer.

Note ● Only operate the device at appropriate times. Please also observe local regulations and directives. When operating early in the morning or late in the evening, other people may be disturbed.

Safe operation of cordless blower

⚠ CAUTION ● Danger to health due to inhalation of dust. Wear a respiratory mask when working with the device. ● Moisten dusty surfaces to reduce dust impact. ● Do not operate the device near an open window. ● Never direct the blower nozzle at people or animals.

ATTENTION ● Damage to the device if waste is sucked into the air intake. Do not place the blower on or near loose waste. ● Never insert objects into the blower pipes.

Note ● Use the extension of the nozzle so that the airflow can be close to the ground and work effectively.

Safe operation of cordless vacuum cleaner

⚠ WARNING ● Risk of injury if the cordless aspirator in suction mode is only used with the upper suction pipe. You must connect the upper and lower suction pipe together before using the device for the first time.

● Risk of injury due to waste being flung about. Never use the cordless vacuum cleaner without the collecting bag installed. Before operation, make sure that the collecting bag is in good condition and is completely closed. ● Risk of injury and damage to the device. Do not vacuum sharp or larger objects with the device, such as e.g. glass shards, stones, bottles, cans or metal parts. ● Fire in the collecting bag. Do not vacuum burning or burning objects, such as e.g. cigarettes, ashes from fireplaces or grills. ● Serious injuries due to rotating impeller blades. Keep body parts away from rotating parts. Turn off the motor, and wait for the blades to stop turning before opening the suction flap, or attaching / replacing the pipes or opening or removing the collecting bag. ● Switch the motor off, remove the battery pack and make sure that all moving parts have completely stopped before you remove a blockage.

ATTENTION ● Blockage in the suction pipe. Do not hold the suction pipe directly in the debris heap. Move the device from one side to the other from the outside of the suction material. ● Keep the motor higher than the intake end of the suction pipe. ● Material accumulation due to material again emerging from the suc-

tion port. Make sure that no material accumulates in the flow area.

Safe transport and storage

⚠ WARNING ● Switch the device off, allow it to cool down and remove the battery pack before storage or transportation.

⚠ CAUTION ● Risk of injury and damage to the device. Secure the device against movement or falling down during transport.

ATTENTION ● Remove all foreign bodies from the device before storage or transportation. ● Store the device in a dry, well ventilated location out of the reach of children. Keep the device away from corrosive substances such as garden chemicals. ● Do not store the device outdoors.

Safe servicing and care

⚠ WARNING ● Turn off the motor, make sure all moving parts have fully stopped and remove the battery pack before inspecting, cleaning, or servicing the device. ● Service and maintenance work on this device require special care and knowledge and may only be performed by appropriately qualified personnel. Take the device to an authorized Customer Service department for maintenance. ● Ensure that the device is in a safe condition by regularly checking that all bolts, nuts and screws are screwed tight. ● Switch the motor off, remove the battery pack and make sure that all moving parts have completely stopped before you remove a blockage.

⚠ CAUTION ● Only use accessories and spare parts and attachments that are approved by the manufacturer. Only original spare parts, original accessories and original attachments ensure fault-free and safe operation of the device.

ATTENTION ● Clean the product with a soft, dry cloth each time after use.

Note ● You may only perform the adjustments and repairs described in these operating instructions. Contact your authorised Customer Service department for other repairs. ● Have damaged or illegible labels replaced by an authorised Customer Service centre.

Residual risks

⚠ WARNING

- Certain residual risks remain present, even when the device is operated in the prescribed manner. The following dangers can be present when using the device:
- Vibration can cause injuries. Use the correct tools for the job, use the handles provided and use the lowest required speed in order to complete the job.
- Noise can cause hearing injuries. Wear hearing protection and limit the duration of exposure.
- Risk of injuries from hurled objects that may escape from the blower pipe due to the air pressure, if the collecting bag is not properly secured or is damaged.
- Always wear eye protection.

Risk reduction

⚠ CAUTION

- Using the device for longer periods can cause poor circulation in the hands due to vibrations. A general

period of use cannot be set, because this depends on several influencing factors:

- Personal tendency to suffer from poor circulation (frequently cold fingers, tingling sensation in the fingers)
- Low ambient temperature. Wear warm gloves to protect your hands.
- Holding the device too tightly hindering blood circulation.
- Continuous operation is more harmful than operation interrupted by work breaks.

You should see a doctor if using the device regularly and for lengthy periods of time, and in the event of repeated occurrences of symptoms such as tingling in the fingers or cold fingers.

Intended use

⚠ WARNING

The device is not intended for use by children, persons with restricted physical, sensory or mental abilities or persons unfamiliar with these instructions.

- The device is intended for outdoor use only.
- The device may only be used in a dry, well-lit environment.
- The device is designed for blowing away and vacuuming light debris such as leaves, grass and other garden waste.
- The device is used to suck in and shred dirt and leaves, and to store them in the collecting bag.

Any other use, e.g. sucking in water or other fluids, is prohibited.

Environmental protection



The packing materials can be recycled. Please dispose of packaging in accordance with the environmental regulations.



Electrical and electronic appliances contain valuable, recyclable materials and often components such as batteries, rechargeable batteries or oil, which - if handled or disposed of incorrectly - can pose a potential threat to human health and the environment. However, these components are required for the correct operation of the appliance. Appliances marked by this symbol are not allowed to be disposed of together with the household rubbish.

Notes on the content materials (REACH)

Current information on content materials can be found at: www.kaercher.com/REACH

Accessories and spare parts

Only use original accessories and original spare parts. They ensure that the appliance will run fault-free and safely.

Information on accessories and spare parts can be found at www.kaercher.com.

Scope of delivery

The scope of delivery for the appliance is shown on the packaging. Check the contents for completeness when unpacking. If any accessories are missing or in the event of any shipping damage, please notify your dealer.

Safety devices

⚠ CAUTION

Missing or modified safety devices

Safety devices are provided for your own protection.

Never modify or bypass safety devices.

Safety switch

The safety button is actuated by the fixing screw on the suction pipe. It ensures that the device can only be put into operation with the suction pipe installed.

Symbols on the device

	Read the operating instructions and all safety instructions before operating the device for the first time.
	Always wear suitable eye protection and hearing protection when working with the device.
	Do not subject the device to rain or moist conditions.
	Danger due to flung objects. Keep spectators away from the work area.
	Rotating fan wheels. Keep hands and feet away from the openings while the device is in operation.
	The guaranteed sound level specified on the label is 107 dB.
	Pull: Quick-release catch
	Vacuuming operations
	Blowing mode

Description of the device

The maximum amount of equipment is described in these operating instructions. Depending on the model used, there are differences in the scope of delivery (see packaging).

See graphics page for illustrations

Illustration A

- ① Carrying belt
- ② Guide rollers
- ③ Lower suction pipe
- ④ Blower pipe
- ⑤ Battery pack unlocking button
- ⑥ Type plate

- ⑦ Motor casing
- ⑧ Motor casing locking pin
- ⑨ Upper blower and suction pipe
- ⑩ Fixing screw for suction pipe
- ⑪ Front handle
- ⑫ Eyelet for carrying belt
- ⑬ Turbo boost button
- ⑭ Speed regulation
- ⑮ Rear handle
- ⑯ Trigger
- ⑰ Selector switch for blower / suction mode
- ⑱ Connecting piece
- ⑲ Adapter for collecting bag
- ⑳ Collecting bag
- ㉑ *Battery Pack Battery Power 18V
- ㉒ *Quick Charger Battery Power 18V

* optional

Rechargeable battery pack

The device can be operated with a 18 V Kärcher Battery Power battery pack.

Installation

Installation of blower / suction device

⚠ **WARNING**

Risk of injury due to incompletely assembled device

Only operate the appliance once it is fully assembled and functional.

1. Push the lever down and snap the blower pipe into the adapter of the guide rollers in the desired position.

Illustration B

2. Allow the adapter for the lower suction pipe to click into place in the mounting for the blower pipe.

Illustration C

3. Allow the lower suction pipe to click into place in the upper blower and suction pipe.

Illustration D

4. Install the motor casing.

Illustration E

- a Pull out the motor casing locking pin as far as possible.
- b Insert the blower and suction pipe into the motor casing.
- c Insert the motor casing locking pin and check that it is correctly seated in the holder.
- d Insert the suction pipe fixing screw and tighten it until it clicks audibly.
The safety button has tripped.
5. Install the collecting bag, see chapter *Installing the collecting bag*.
6. Attach the carrying belt to the eyelet on the handle, see chapter *Hooking the carrying belt*.

Installing the collecting bag

1. Install the collecting bag.

Illustration F

- a Hook the tab of the collecting bag into the eyelet on the upper blower and suction pipe.
- b Pull the collecting bag on the adapter over the connecting piece.
- c Allow the adapter to click into place.

Hooking the carrying belt

1. Hook the carrying belt into the eyelet on the handle, making sure the quick release is accessible at all times.

Illustration G

Operation

⚠ **WARNING**

Risk of injury due to incompletely assembled device

Only operate the appliance once it is fully assembled and functional.

⚠ **CAUTION**

Risk of injury from objects flying about

Wear safety goggles and suitable protective gloves for all work with the device.

Control elements

The cordless aspirator has the following control elements:

- A speed control lever to regulate the speed of the airflow steplessly.
- A turbo boost button to maximise the air speed set with the speed regulation.
- A selector lever to switch between the blow and suction modes.

Inserting the battery pack

ATTENTION

Dirty contacts

Damage to the device and battery

Check the battery mount and the contacts for soiling and clean them as necessary before inserting the battery.

Illustration H

1. Push the battery into the mounting in the device until it audibly latches into place.

Switch on the device (suction mode)

⚠ **CAUTION**

Risk of injury from flying parts and hearing damage due to noise

Always wear eye and hearing protection.

⚠ **WARNING**

Risk of injury due to loss of control

Always hold the device with both hands on the provided handles.

1. Insert the battery pack, see chapter *Inserting the battery pack*.
2. Start the device.

Illustration I

- a Set the selector lever to suction mode.

- b Press the trigger.

The device starts up.

- c Use the speed regulation to adjust the amount of airflow.
- d If necessary, press the turbo boost button for maximum flow speed.

Switch on the device (blower mode)

⚠ CAUTION

Risk of injury from flying parts and hearing damage due to noise

Always wear eye and hearing protection.

⚠ WARNING

Risk of injury due to loss of control

Always hold the device with both hands on the provided handles.

1. Insert the battery pack, see chapter *Inserting the battery pack*.
2. Start the device.

Illustration J

- a Set the selector lever to blower mode.
- b Press the trigger.
The device starts up.
- c Use the speed regulation to adjust the amount of airflow.
- d If necessary, press the turbo boost button for maximum flow speed.

Remove the collecting bag

⚠ WARNING

*Movement of the fan wheels and mulching blades
Incision injuries*

Wear protective gloves.

Keep your fingers away from the fan and mulching blades.

1. Switch off the device.
2. Remove the battery pack, see chapter *Removing the battery pack*.
3. Remove the collecting bag.

Illustration K

- a Take the tab of the collecting bag off the eyelet.
- b Push the adapter down.
- c Pull the collecting bag off the connecting piece.

Emptying the collecting bag

⚠ WARNING

*Movement of the fan wheels and mulching blades
Incision injuries*

Wear protective gloves.

Keep your fingers away from the fan and mulching blades.

1. Switch off the device.
2. Remove the battery pack, see chapter *Removing the battery pack*.
3. Remove the collecting bag, see chapter *Remove the collecting bag*.
4. Open the zipper on the collecting bag and empty the contents.

Illustration L

Removing the battery pack

Note

During longer work breaks, remove the battery pack from the device and secure it against unauthorised use.

1. Pull the battery pack unlocking button in the direction of the battery pack.

Illustration M

2. Press the battery pack unlocking button to unlock the battery pack.
3. Remove the battery pack from the device.

Finishing operation

1. Remove the battery pack from the device (see Chapter *Removing the battery pack*).

2. Clean the device (see Chapter *Cleaning the device*).

Transport and storage

1. Switch off the device.
2. Remove the battery pack, see Chapter *Removing the battery pack*.
3. Remove the collecting bag, see chapter *Remove the collecting bag*.
4. Remove the suction pipe.

Illustration N

- a Unscrew the fixing screw on the suction pipe.
- b Remove the suction pipe fixing screw.
- c Pull out the motor casing locking pin as far as possible.

⚠ WARNING

*Movement of the fan wheels and mulching blades
Incision injuries*

Wear protective gloves.

Keep your fingers away from the fan and mulching blades.

- d Remove the upper blower and suction pipe from the motor casing.

Care and service

Cleaning the device

⚠ WARNING

Uncontrolled startup

Risk of injury

Remove the battery pack from the device during work breaks and before carrying out any service or care work.

ATTENTION

Incorrect cleaning

Damage to the device

Clean the device with a damp cloth.

Do not use solvent-based cleaning agents.

Do not immerse the device in water.

Do not clean the device with a hose or high-pressure water jet.

1. Switch off the device.
2. Remove the battery pack (see chapter *Removing the battery pack*).
3. Clean the exterior of the device with a soft, dry cloth or with a brush.

Illustration O

Removing blockage

Note

Do not try to remove the fan or mulching blades. If removal of the mulching blades or fan is required, contact an authorised Customer Service centre.

⚠ WARNING

*Movement of the fan wheels and mulching blades
Incision injuries*

Wear protective gloves.

Keep your fingers away from the fan and mulching blades.

1. Switch off the device.
2. Remove the battery pack, see Chapter *Removing the battery pack*.
3. Remove the collecting bag, see chapter *Remove the collecting bag*.
4. Remove the upper blower and suction pipe.

Illustration P

- a Unscrew the fixing screw on the suction pipe.
- b Remove the suction pipe fixing screw.

- c Pull out the motor casing locking pin as far as possible.
 - d Remove the upper blower and suction pipe from the motor casing.
5. If necessary, remove any blockage from the pipes.
 6. If necessary, remove any blockage in the adapter.
 7. If necessary, remove any blockage from the connecting piece.
 8. Clean the openings of the motor casing.

Troubleshooting guide

Malfunctions often have simple causes that you can remedy yourself using the following overview. When in doubt, or in the case of malfunctions not mentioned here, please contact your authorised Customer Service.

As the battery pack ages, even if it is looked after, its capacity reduces such that the full run time will no longer be reached when fully charged. This does not indicate a defect.

Fault	Cause	Rectification
The device does not start up	Battery pack is not inserted correctly.	● Push the battery pack into the mounting until it latches into place.
	Battery pack is empty	● Charge the battery pack.
	Battery pack is defective.	● Replace the battery pack.
	Safety button did not trip during assembly.	1. Unscrew the suction pipe fixing screw once again. 2. Tighten the suction pipe fixing screw until a clicking sound is heard. The safety button has tripped.
The device stops during operation	The battery has overheated	● Stop working and allow the battery to cool down to normal battery temperature.
	Motor has overheated	● Stop working and allow the motor to cool down.

Warranty

The warranty conditions issued by our relevant sales company apply in all countries. We shall remedy possible malfunctions on your appliance within the warranty period free of cost, provided that a material or manufacturing defect is the cause. In a warranty case, please contact your dealer (with the purchase receipt) or the next authorised customer service site. (See overleaf for the address)

Technical data

		BLV 18-200
Device performance data		
Nominal voltage	V	18
Average air speed of cordless blower	km/h	152,9 +/- 10 %
Average air speed of cordless blower (turbo mode)	km/h	186,7 +/- 10 %
Maximum theoretical air speed of cordless blower	km/h	186,7 +/- 10 %
Maximum theoretical air speed of cordless blower (turbo mode)	km/h	262,9 +/- 10 %
Average air speed of cordless suction device	km/h	112,7 +/- 10 %
Average air speed of cordless suction device (turbo mode)	km/h	135,2 +/- 10 %
Maximum theoretical air speed of cordless suction device	km/h	138,4 +/- 10 %
Maximum theoretical air speed of cordless suction device (turbo mode)	km/h	162,6 +/- 10 %
Mulch ratio		10:1
Collecting bag volume	l	45

BLV 18-200

Dimensions and weights

Weight (without battery pack)	kg	3,5
Length x width x height	mm	1243 x 171 x 376

Determined values in acc. with EN 50636-2-100

Sound level L_{pA} Cordless blower	dB(A)	87,6
Sound level L_{pA} Cordless blower/ vacuum	dB(A)	90,8
Uncertainty K_{pA}	dB(A)	3,0
Sound power level $L_{WA} + K$ uncertainty Y_{WA}	dB(A)	107
Total vibration value for cordless blower	m/s^2	3,0
Total vibration value for cordless blower/vacuum	m/s^2	3,5
Uncertainty K	m/s^2	1,5

Subject to technical modifications.

Vibration value

⚠ WARNING

The specified vibration value was measured using a standard test procedure and may be used to compare devices.

The specified vibration value may be used in a provisional assessment of the load.

Depending on the way the device is used, the vibration emission can deviate from the specified overall value during the current use of the device.

Device with a hand-arm vibration value > 2.5 m/s²
(see chapter *Technical Data* in the operating
instructions)

⚠ CAUTION • *Uninterrupted use of the device for several hours can lead to numbness.* • *Wear warm gloves to protect your hands.* • *Take regular breaks from work.*

EU Declaration of Conformity

We hereby declare that the machine described below complies with the relevant basic safety and health requirements in the EU Directives, both in its basic design and construction as well as in the version placed in circulation by us. This declaration is invalidated by any changes made to the machine that are not approved by us.

Product: Cordless blower/vacuum

Type: 1.444-10x.x

Currently applicable EU Directives

2006/42/EC (+2009/127/EC)

2014/30/EU

2000/14/EC (+2005/88/EC)

2011/65/EU

Harmonised standards used

EN 60335-1:2012+A11:2014+A13:2017

EN 50636-2-100:2014

EN 55014-1: 2017

EN 55014-2: 2015

EN 50581: 2012

Conformity evaluation procedure used

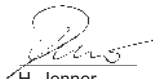
2000/14/EC and amended by 2005/88/EC: Appendix V

Sound power level dB(A)

Measured:105

Guaranteed:107

The undersigned act on behalf and under the power of attorney of the company management.



H. Jenner

Chairman of the Board of Management



S. Reiser

Director Regulatory Affairs & Certification

Documentation supervisor:

S. Reiser

Alfred Kärcher SE & Co. KG

Alfred-Kärcher-Str. 28 - 40

71364 Winnenden (Germany)

Ph.: +49 7195 14-0

Fax: +49 7195 14-2212

Winnenden, 2018/09/01

Contenu

Remarques générales.....	18
Consignes de sécurité.....	18
Utilisation conforme.....	20
Protection de l'environnement.....	21
Accessoires et pièces de rechange	21
Etendue de livraison.....	21
Dispositifs de sécurité	21
Symboles sur l'appareil	21
Description de l'appareil	21
Montage	22
Commande.....	22
Transport et stockage	23
Entretien et maintenance	23
Dépannage en cas de défaut.....	24
Garantie	24
Caractéristiques techniques.....	24
Déclaration UE de conformité	25

Remarques générales



Veillez lire ces consignes de sécurité, ce manuel d'instructions original, les consignes de sécurité jointes au bloc-batterie et le manuel d'instructions original joint à votre bloc-batterie/chargeur standard avant la première utilisation de votre appareil. Suivez ces instructions. Conservez les documents pour une utilisation ultérieure ou pour le propriétaire suivant.

Outre les remarques dans ce manuel d'utilisation, vous devez prendre en compte les directives générales de sécurité et les directives pour la prévention des accidents du législateur.

Consignes de sécurité

Niveaux de danger

⚠ DANGER

- Indique un danger immédiat qui peut entraîner de graves blessures corporelles ou la mort.

⚠ AVERTISSEMENT

- Indique une situation potentiellement dangereuse qui peut entraîner de graves blessures corporelles ou la mort.

⚠ PRÉCAUTION

- Indique une situation potentiellement dangereuse qui peut entraîner des blessures légères.

ATTENTION

- Indique une situation potentiellement dangereuse qui peut entraîner des dommages matériels.

Consignes de sécurité générales

⚠ DANGER • *Blessures graves dues à un manque de concentration pendant le travail. N'utilisez jamais l'appareil sous l'influence de drogues, d'alcool ou de médicaments, ou si vous êtes fatigué.*

⚠ AVERTISSEMENT • *Veillez lire toutes les consignes de sécurité et les instructions. Tout manquement au respect des consignes de sécurité et des instructions risque de provoquer une électrocution et/ou de graves blessures. Veillez conserver toutes les consignes de sécurité et les instructions fournies en cas de besoin à l'avenir.* • *L'appareil ne doit pas être utilisé par des enfants ou personnes dont les*



THANK YOU!
MERCI! DANKE! ¡GRACIAS!



Registrieren Sie Ihr Produkt und profitieren Sie von vielen Vorteilen.

Register your product and benefit from many advantages.

Enregistrez votre produit et bénéficiez de nombreux avantages.

Registre su producto y aproveche de muchas ventajas.

www.kaercher.com/welcome



Bewerten Sie Ihr Produkt und sagen Sie uns Ihre Meinung.

Rate your product and tell us your opinion.

Évaluer votre produit et dites-nous votre opinion.

Reseñe su producto y díganos su opinión.



www.kaercher.com/dealersearch

Alfred Kärcher SE & Co. KG
Alfred-Kärcher-Str. 28-40
71364 Winnenden (Germany)
Tel.: +49 7195 14-0
Fax: +49 7195 14-2212

